



  
*The*  
*Prairie Creek Inn*  
Corporate Retreat & Meeting Planning Guide



# *Welcome to The Prairie Creek Inn*

The Prairie Creek Inn is an exclusive getaway destination in the heart of Central Alberta. Our luxurious full service country inn is open year round and specializes in getaways, corporate retreats, meetings, special occasions, vacations and outdoor adventures – all in a quiet, secluded setting of towering spruce trees and beautiful landscapes.

Our 60 acre property features a cluster of buildings consisting of custom designed cottages and guest suites, each with its own unique style, décor and personality, a 50 seat casual fine dining restaurant and a professional meeting room, all within a short stroll of Prairie Creek.

Centrally situated a comfortable 2 hour drive from both Calgary and Edmonton, only 55 minutes west of Red Deer and 12 minutes south of Rocky Mountain House, on well kept paved roads, we are easy to get to and totally accessible in any season.

We provide the utmost in hospitality, first class food and beverage services and professional event planning to ensure groups are personally taken care of and receive all the attention and privacy they deserve.



Top: Prairie Creek with Adirondack Chairs

Bottom: Exterior of Main Inn & Heartstone Restaurant

## **TABLE OF CONTENTS**

- 4 Meeting Packages
- 5 Deerview Meeting Room
- 6 Accommodations
- 8 Heartstone Restaurant
- 9 Food & Liquor Services
- 11 Map & Contact Information

# *An ideal gathering spot*

A corporate retreat or business meeting at The Prairie Creek Inn is a refreshing departure from the standard facilities and services offered at large hotels, urban conference facilities or crowded resorts.

Our beautiful country atmosphere coupled with our luxurious accommodations, superb dining and a plethora of outdoor team building activities make The Prairie Creek Inn an ideal corporate meeting place. As important, a trip to The Prairie Creek Inn is a valuable 'perk' that will have a great positive effect on your team's culture, morale and bottom line.

Every group is ensured complete privacy with exclusive use of the Inn\*, away from the crowds, distractions and other pressures that keep the important business tasks and planning from getting done. Deerview meeting room is bright, comfortable, private and well equipped, allowing for productivity and creativity to flow effortlessly.

We can organize on and off-site activities such as golfing, hiking, guided fly fishing, helicopter tours, team building activities and more to compliment your meeting. All the details will be meticulously planned and executed so you can attend to the business, and fun, at hand.

## **Meeting Services & Amenities:**

- Beautiful creekside location
- 16 luxury guest rooms or cottages with private bathrooms – accommodates up to 20 singles or 40 doubles
- Deerview Meeting Room
- Heartstone Restaurant
- Break out spaces
- Outdoor decks
- Forests, meadows expansive lawns
- Complimentary meeting equipment
- High speed Wifi Internet
- Coffee/snack breaks
- Breakfast, lunch and dinner
- Hors d'oeuvres
- Licensed bar – cocktails, wine
- Campfires and outdoor seating
- Onsite or offsite team building activities, games and special excursions
- Office services
- VIP welcome gifts if required

\*A minimum booking of 16 rooms is required for exclusive use of the Inn.

*Choose one of our Packages or let us customize a corporate retreat to suit your needs.*



## Meeting and Corporate Retreat Packages

*Combining work & perk*

Whether you want an intensive one day planning session or a week long corporate retreat, we have designed a number of packages for your consideration.

All rates are based on a group of 12 and include taxes, meeting equipment and service charges. Alcoholic beverages are extra. These rates and packages may change and are only meant to be examples of what we can offer. Let us customize a package for you to meet your specific requirements.

### Executive 1 Day Meeting

FROM \$190 PP

Get out of the office for a productive daylong meeting or strategic planning session with your team. Have a relaxing gourmet dinner together and return home totally rejuvenated, inspired and eager to start the next day with fresh new ideas to implement.

ARRIVE 8:30 - 9AM  
MEETING 9AM - 5 PM  
BREAKS UPON ARRIVAL & 3:30PM

LUNCH 12:30 - 1:30PM  
DINNER 5:30PM  
LEAVE FOR HOME 7PM

### Executive 1 Night Corporate Retreat

FROM \$470 PP

This package offers 9 hours of productive meeting time and some valuable social activity, and you only have to be away from the office for one day.

DAY 1  
ARRIVE AND CHECK INTO YOUR ROOM 4 - 6PM  
COCKTAILS OR SOCIAL GATHERING 6 PM  
DINNER 6:30PM  
MEETING OR SOCIAL ACTIVITY 8 - 10PM

DAY 2  
BREAKFAST 7:30 - 8:30AM  
MEETING 8:30AM - 4PM  
COFFEE BREAK 10:15AM & 3PM  
WORKING LUNCH 12:30 - 1:30PM  
LEAVE FOR HOME BY 4PM

### Executive 1 Night - 2 Day Corporate Retreat

FROM \$580 PP

Stay overnight for just 1 night but meet for 2 full days.

DAY 1  
ARRIVE 10AM  
MEETING 10AM - 4PM  
BREAK 10:15AM & 3PM  
CHECK IN 4PM  
COCKTAILS/GATHERING 6PM  
DINNER 6:30PM  
MEETING OR SOCIAL ACTIVITY 8 - 10PM

DAY 2  
BREAKFAST 7:30 - 8:30AM  
MEETING 8:30AM - 4PM  
BREAK 10:15AM & 3PM  
LUNCH 12 - 1PM  
LEAVE FOR HOME BY 4PM

### Executive 2 Night - 3 Day Corporate Retreat

FROM \$945 PP

With 20 hours of productive meeting time, this retreat enables executives to get more 'business' out of their retreat & still have time to incorporate team building activities.

DAY 1  
ARRIVE 10 AM  
MEETING 10 AM - 4PM  
BREAK 10:15AM & 3PM  
CHECK IN 4 PM  
COCKTAILS/GATHERING 6PM  
DINNER 6:30PM  
MEETING/ACTIVITY 8 - 10PM

DAY 2  
BREAKFAST 7:30 - 8:30AM  
MEETING 8:30AM - 5PM  
BREAKS 10:15AM & 3:30PM  
LUNCH 12 - 1PM  
COCKTAILS/GATHERING 6PM  
DINNER 6:30PM  
MEETING/ACTIVITY 8 - 10PM

DAY 3  
BREAKFAST 7:30 - 8:30AM  
MEETING 8:30AM - 4PM  
BREAK 10:30AM & 3PM  
LUNCH 12 - 1PM  
LEAVE FOR HOME 4PM

### Executive 3 Night Corporate Retreat

FROM \$1400 PP

Offering 30 hours of productive meeting time coupled with a 'mini vacation' that will leave your executives inspired, recharged and a more cohesive team.

DAY 1  
ARRIVE/CHECK IN 4 - 6PM  
COCKTAILS/GATHERING 6PM  
DINNER 6:30PM  
MEETING/ACTIVITY 8 - 10PM

DAYS 2 & 3  
BREAKFAST 7:30 - 8:30AM  
MEETING 8:30AM - 5 PM  
BREAKS 10:30AM & 3:30PM  
LUNCH 12:30 - 1:30PM  
COCKTAILS/ACTIVITY 6PM  
DINNER 6:30 PM  
MEETING/ACTIVITY 8 - 10PM

DAY 4  
BREAKFAST 7:30 - 8:30 AM  
MEETING 8:30AM - 4PM  
BREAK 10:15AM & 3PM  
LUNCH 12 - 1PM  
LEAVE FOR HOME 4PM

## Deerview Meeting Room

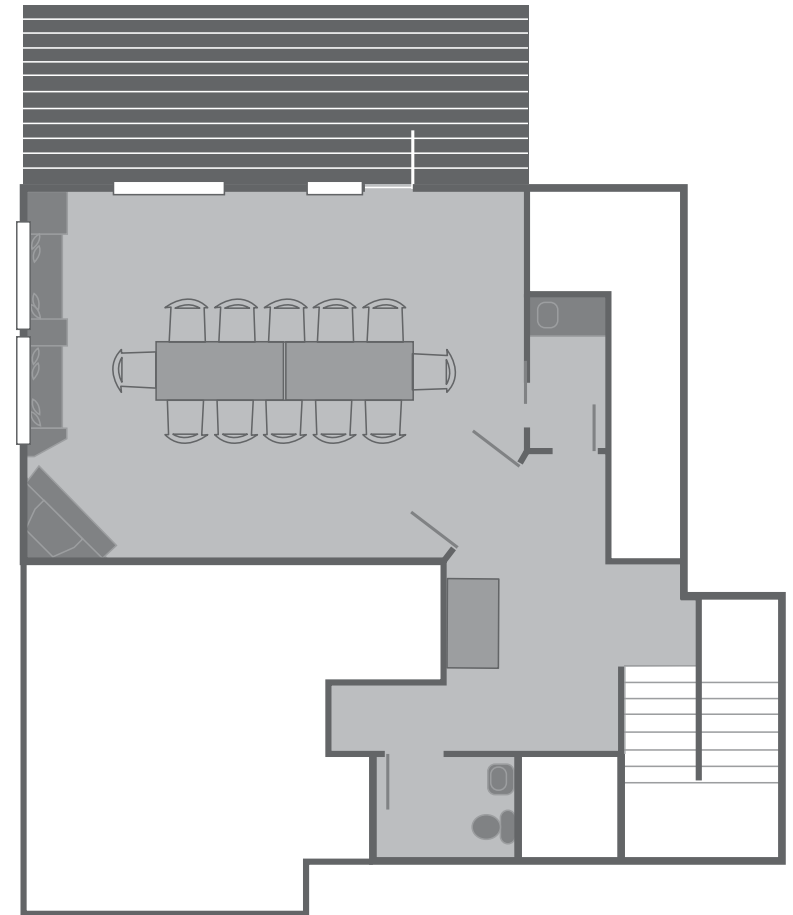
### *Professional meeting venue*

Our Deerview Meeting Room offers the perfect place for executive teams to focus on creativity, innovation and success away from the day to day distractions of the office. Whether your meeting is for a few hours or a few days, we have all the amenities you need.

The Deerview Room features a cozy fieldstone fireplace and window seat, ample lighting and expansive windows overlooking the property's beautiful trees and lawns. The room is located on the lower walkout level of the restaurant building and is accessed down a flight of stairs.

On warmer days, guests can step outside the garden doors, relax on the outdoor patio and enjoy the fresh country air. Or better yet, take your break by Prairie Creek and enjoy its ever flowing energy. A meeting doesn't get much better than that!

- Comfortable leather executive chairs
- Large boardroom tables
- Free High Speed WiFi
- Flip chart stands and markers
- Projector & screen 70"x70"
- IPOD docking station & speakers
- Breakout areas – in and outdoors
- Refreshment service area
- Outside access & covered patio
- Gas Fieldstone Fireplace
- Adjustable thermostat for temperature control
- Warm, tasteful décor



#### ROOM SIZE:

535 sq. ft. 20' x 27.5'  
Ceiling height: 9'

#### RENTAL PERIOD:

8am to 11pm

#### SEATING:

Boardroom	16 people
Classroom	20 people
U-shaped	16 people
Theatre	50 people
Standing	60 people

## Accommodations

### *Casual elegance at its best*

Your team will truly feel pampered in the spacious well-appointed accommodations at The Prairie Creek Inn. Offering an exciting experience of its own, each room is uniquely designer decorated with custom made bedding and furniture, attractive artwork and accessories and a number of special touches in keeping with a high quality corporate retreat venue.

Our guest rooms are distributed among 6 building sites: Main Inn - 7 suites; Coach House - 3 suites; 4 Cottages - 2 2-bedroom and 2 1-bedroom and 2 studio cottages attached back to back.

All buildings are a short stroll away from each other and separated by the expansive grounds of the property and trees. Our Creekside Cottage, Fireside Cottage, Stables Suite, Explorer's Suite and Loft are pet friendly. An extra fee of \$30/day applies. The Bird's Nest Suite and Loft has a double hide-a-bed for an additional charge of \$35/person/day.

**Check in**            **4 to 6 pm**  
**Check out**        **12 Noon**  
**Occupancy**      **40 Double Occupancy**  
                         **20 Single Occupancy**

#### **Rooms amenities:**

- Gas fireplaces (Creekside Cottage has a wood burning fireplace)
- Outdoor decks or patios
- Deep soaker tubs (7 rooms have double soaker tubs)
- Whirlpool tubs in 3 suites
- Pillow top mattresses
- Cozy sitting areas with two chairs
- Feather duvets and pillows, and rich bed linens
- LED flat screen satellite TV and DVD
- Complimentary WiFi
- Clock radios with IPOD docking station
- Bar fridges
- Complimentary coffee or tea
- Iron, ironing board, hairdryer & luggage rack
- Luxurious bath robes and towels
- Luxury all natural toiletries
- Makeup mirrors
- Unique decorating and artwork
- Writing or working desks



Canadiana Suite

Room Name	Location	Occ	Room Description
<b>Main Inn</b>			
West Country Suite	Main floor middle	2 People 1 King	Our largest suite with a king four poster bed, in-room double Whirlpool bathtub, steam shower, expansive fieldstone fireplace, vaulted ceilings & large balcony.
Brown Trout Suite	Lower walk out level west corner	2 People 1 King	Roomy deluxe king suite with a double soaker tub, walk-in shower, fireplace & walk-out patio onto the grounds.
Woodlands Suite	Lower walk out level middle	2 People 1 King	Deluxe king suite with a custom made log bed, double soaker tub, corner shower, fireplace & walk-out patio onto the grounds.
Golden Meadows Suite	Lower walk out level middle	2 People 1 King	Deluxe king suite with a double corner soaker tub, shower, double vanity, fireplace & walk-out patio onto the grounds.
Home on the Range Suite	Main floor east corner	2 People 1 King	Upscale western inspired king suite with custom walk in double shower, double vanity with granite vessel sinks, fireplace and balcony. (no bathtub)
Bird's Nest Suite	Lower walk out level west corner	Up to 4 1 King + 1 double sofa bed	Spacious king suite, large sitting area with double sofa bed, fireplace, single soaker tub/shower & walk out patio onto the grounds.
Canadiana Suite	Main floor west corner	2 People 1 Queen	Bright, lovely queen room with single soaker tub/shower, fireplace, and balcony.
<b>Treehouse Suites</b>			
Aspen Treehouse Suite	South of Inn, front west side	2 People 1 King	Luxury studio cottage with a custom made king bed, double Whirlpool tub, shower, gas fireplace, covered deck, private outdoor fire pit & large windows with views of the forest.

**16 Rooms Accommodates 40 People Double Occupancy**

Room Name	Location	Occ	Room Description
Spruce Treehouse Suite	South of Inn, back east side	2 People 1 King	Luxury studio cottage with a custom made king log canopy bed, double Whirlpool tub, shower, gas fireplace, covered deck, private outdoor fire pit & large windows with views of the forest.
<b>Coach House</b>			
Stables Suite	West back corner, near cottages	2 People 1 King	Deluxe king suite with a canopy bed, in-room double soaker corner tub, gas fireplace, walk-in shower & private entrance.
Explorer's Suite	East back corner, near cottages	2 People 1 Queen	Cozy queen suite with log bed, gas fireplace, double soaker tub & shower, private entrance.
Loft Suite	Top level, accessed by outdoor stairs	4 People 1 Queen 1 Double Sofa-Bed	One bedroom suite on the upper level of the Coach House building, with single soaker tub/shower, gas fireplace, full kitchen, living room, pull out sofa-bed, two decks.
<b>Guest Cottages</b>			
Creekside Cottage	Beside Fireside Cottage	4 People 2 Queens	Self contained executive 2 bedroom cottage with a spacious living area, fully equipped kitchen, wood-burning fireplace, BBQ, single soaker tub/shower & covered front deck.
Fireside Cottage	Beside Creekside Cottage	4 People 1 King & 1 Queen	Self contained executive 2 bedroom cottage with a spacious living area, fully equipped kitchen, gas fireplace, gas BBQ, single soaker tub/shower & covered front deck.
Birchside Cottage	Near Treehouses	2 People 1 King	Self contained executive 1 bedroom cottage with living area, fully equipped kitchen, gas fireplace, gas BBQ, double free standing soaker tub, glass shower, large covered deck.
Owl's Nest Cottage	Near Treehouses	2 People 1 King	Self contained executive 1 bedroom cottage with living area, fully equipped kitchen, gas fireplace, double free standing soaker tub, glass shower, large covered deck.

# Heartstone

at The Prairie Creek Inn

At the culinary heart of The Prairie Creek Inn is Heartstone, our casually elegant restaurant which offers an exquisite dining experience for guests of the Inn and the surrounding area. Located on the main level of the building, the restaurant handles all the catering and liquor services for corporate retreats, weddings and group gatherings.

Groups using the Deerview Room below the restaurant simply venture upstairs for their meals and dine in style overlooking Prairie Creek and the grounds of the Inn. For convenience, we serve coffee breaks in the meeting room's refreshment service area, and also working lunches if required.



**ROOM SIZE**

700 sq. ft. 20' x 37'  
Ceiling height: 10'- 15'

**SEATING/CAPACITY:**

Banquet	50 people
Standing	75 people

**RENTAL PERIOD:**

noon to 11 pm



## Food & Liquor Services

*Creative, delectable and robust*

Our Heartstone Restaurant features an exquisite menu of fresh casual fine dining dishes. Our chef takes pride in supporting local Alberta farmers while showcasing internationally inspired cuisine.

Our restaurant is fully licensed and offers fine wines, beers, cocktails and premium spirits to compliment our menu. Group events have a choice between an open bar where the host pays for the drinks or a cash bar where individuals pay for their own drinks, or a combination of both.

### Here's a sampling of our menu for corporate retreats and meetings:

#### Breakfast

FROM \$20.00 PP

Our breakfast menu includes a starter buffet of coffee/tea, juice, fresh fruit, yogurt, cereal & milk, muffins or other baked goods and a hot main entrée. Some of our entrée choices include:

- Blueberry Stuffed French Toast with Mixed Berry Coulis, Pork Sausages
- Eggs Benedict with Canadian Peameal Back Bacon, Diced Potatoes
- Mushroom, Zucchini & Three Cheese Frittata, Diced Potatoes & Ham
- Blueberry Buttermilk Pancakes with Maple Syrup, Pork Sausages
- Cheddar, Green Chili & Chive Soufflé, Diced Potatoes, Bacon or Ham

#### Coffee and Refreshment Breaks

FROM \$15.00 PP

Freshly brewed coffee and assorted teas  
Assorted juices or soft drinks  
Basket of freshly baked muffins, cookies, squares or pastries  
Fresh fruit, veggies or cheese plate  
Granola bars, dried fruit, nuts or candies  
Popcorn or other snacks as chosen by the Chef

#### Lunches 3 courses

FROM \$30.00 PP

- Soup of the Day
- Seasonal Greens with House Vinaigrette
- Assorted Sandwiches and/or Wraps with Pickles & Condiments
- Open Faced Ham & Chicken Sandwich, Fresh Tomato & Swiss Cheese Sauce
- Black Pepper Chicken Pasta with Alfredo Sauce
- Build your Own Burritos with Chicken or Shredded Pork and all the Fixings.

\*All lunches come with Chef's freshly prepared Dessert of the Day and Iced Tea and/or Soft Drinks





## Dinner Samples

FROM \$60.00 PP

### BEGINNINGS:

- Chef's Daily Soup Creation
- Coconut Thai Jumbo Shrimp with Thai Red Curry Coconut Sauce, Fresh Herbs, Lime
- Caesar Salad
- Heartstone Charcuterie & Cheese Board with a variety of Cured Meats & Artisan Cheeses, House Made Pickles, Saskatoon Chutney, Crostini



### ENTRÉE:

- Roasted Chicken with Wild Mushroom Cream Sauce
- 8 oz. Alberta Angus Beef Striploin Steak, Peppercorn Au Jus, Beurre Maître d'hôtel
- B.C. Salmon with Maple Ginger Glaze, Lemon Dill Sauce, Shaved Parmesan

\*All Entrees are Served with Fresh Seasonal Vegetables & Chef's Potatoes of the Day

### FINISHINGS:

- Chef's Daily Pie Creation
- Mixed Berry Parfait with French Vanilla Ice Cream
- Crème Brûlée



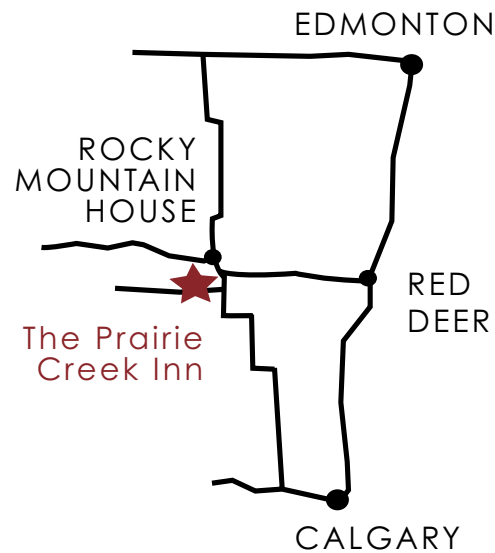
These are only examples of what our chef can prepare for you. We have a number of menu choices and can accommodate any dietary restrictions your guests may have. We ask that you choose your menu in advance and limit your choices to 1 or 2 items per course.

**Top:** Shrimp in Thai Red Curry Coconut Sauce **Middle:** Grilled Bison with Chimichurri Sauce **Bottom:** Double Chocolate Supreme Cake

## Map and Contact Info

*We're easy to get to*

Centrally situated a comfortable 2 hour drive from both Calgary and Edmonton, only 55 minutes west of Red Deer and 12 minutes south of Rocky Mountain House, on well kept paved roads, we are easy to get to and totally accessible in any season.



*Contact us today to host your next event*

For further information or to book your next event, please contact:

**General Manager**

403 844 2672

[info@theprairiecreekinn.com](mailto:info@theprairiecreekinn.com)

Box 22 Site 12 RR 2

Rocky Mountain House AB T4T 2A2

[theprairiecreekinn.com](http://theprairiecreekinn.com)

